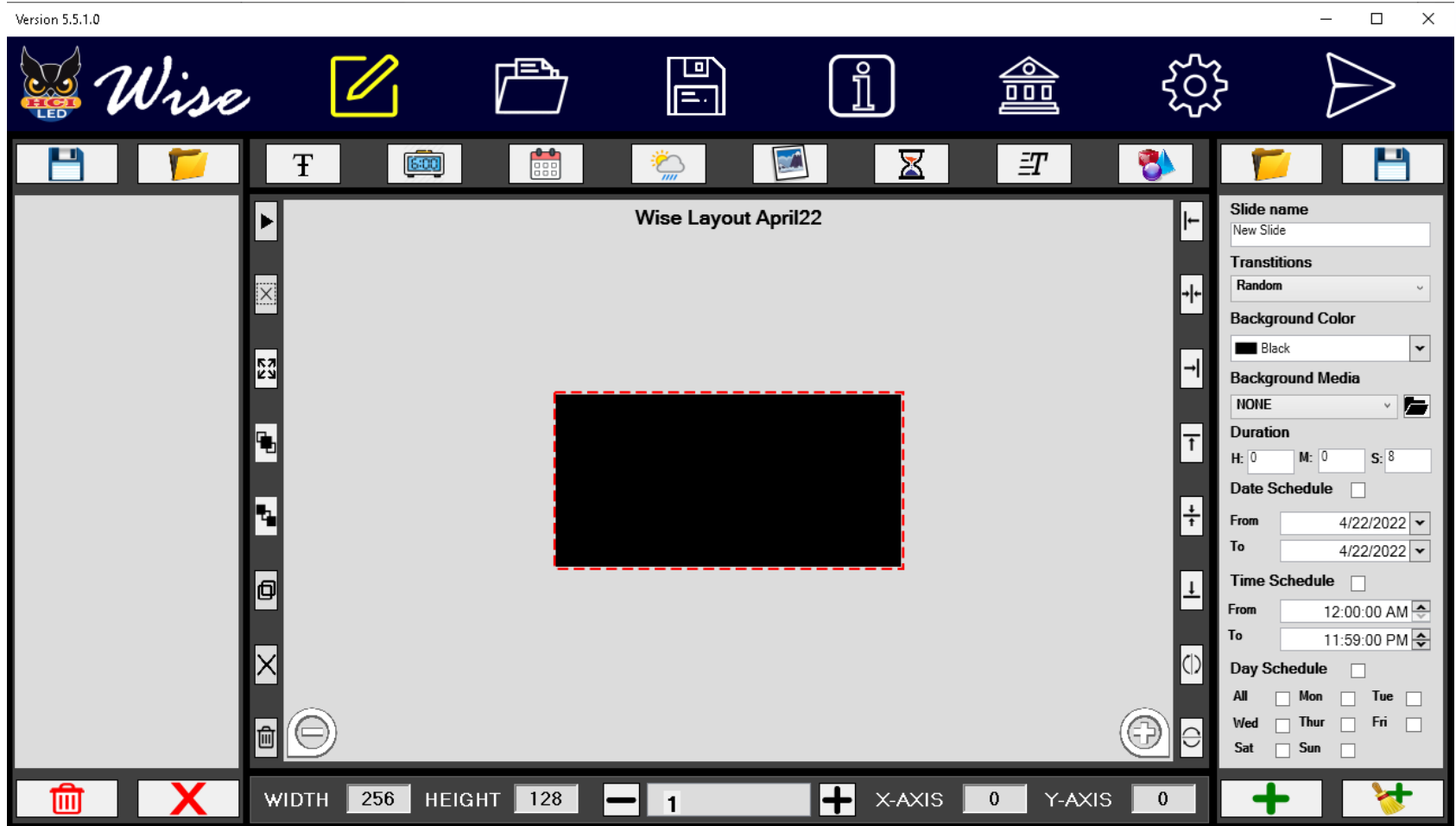


- Page 1 Introduction
- Page 2 Zones
- Page 3 Playlists
- Page 4 Slides
- Page 5 Editor
- Page 6 Layout
- Page 7 Info
- Page 8 Library
- Page 9 Settings
- Page 10 Publish
- Page 11 Tips

# Wise Training Manual

Wise is used to create, edit, and publish media to EMCs (Electronic Message Centers) which are also known as digital LED signs. Use the buttons in the navigation bar at the top, and follow along with the manual to learn how to use the software. Reach out to technical support for remote assistance. (812)213-2657



Page 1	Introduction
Page 2	Zones
Page 3	Playlists
Page 4	Slides
Page 5	Editor
Page 6	Layout
Page 7	Info
Page 8	Library
Page 9	Settings
Page 10	Publish
Page 11	Tips

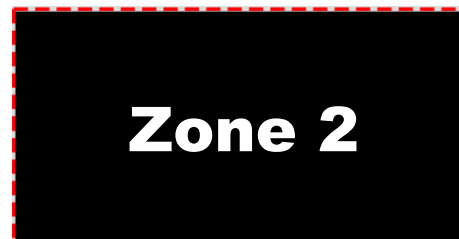
# Zones

By default, one zone is added to the layout. Its size and location is represented in the toolbar at the bottom of Wise. The size and location of the zone can also be edited. Up to four zones can be added to the layout using the plus button in the toolbar. They can also be subtracted by selecting the zone number, then clicking the minus button. Subtracting a zone will also subtract the playlist that is in that zone. Adding a zone will create a new zone at the specified coordinates.



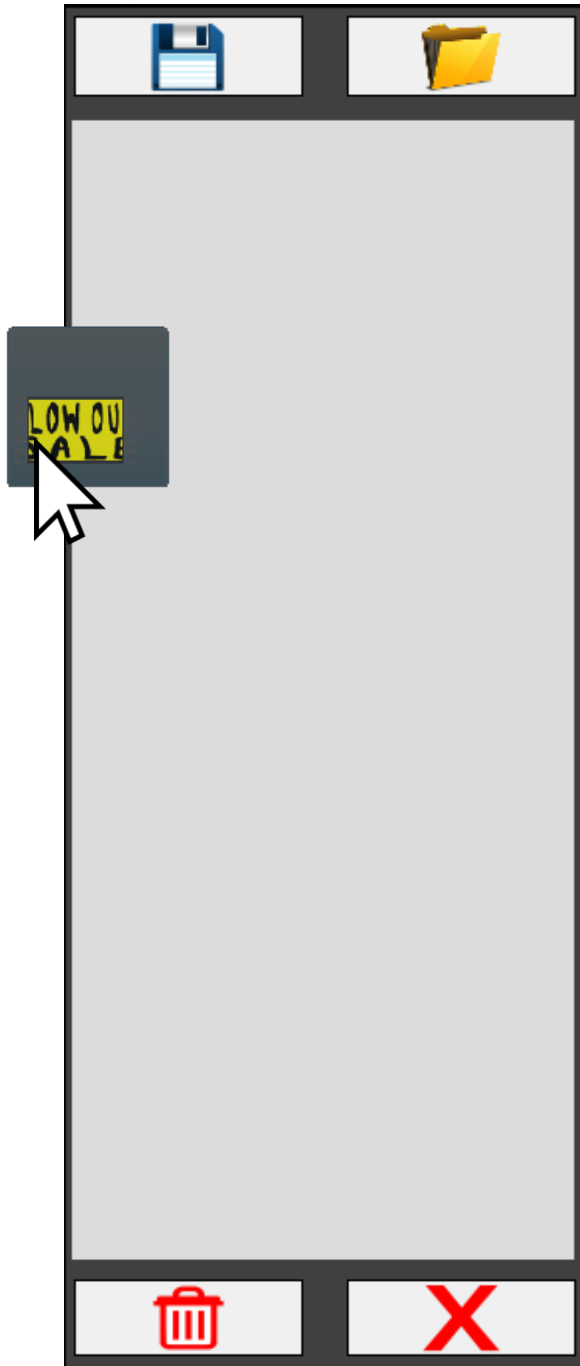
WIDTH	256	HEIGHT	128	-	1	+	X-AXIS	0	Y-AXIS	0
-------	-----	--------	-----	---	---	---	--------	---	--------	---

The EMC's default behavior is to duplicate the primary side to the other sides, but it can be changed to extend the primary side so that a different zone/playlist can be displayed. Please reach out to technical support in order to get the EMC changed to extend the primary side. A zone 2 with same size as zone 1 is added below by clicking the plus button. Notice that its x-axis is width of zone 1. Change the parameters by typing in the desired width, height, x-axis, and y-axis.



WIDTH	256	HEIGHT	128	-	1 2	+	X-AXIS	256	Y-AXIS	0
-------	-----	--------	-----	---	-----	---	--------	-----	--------	---

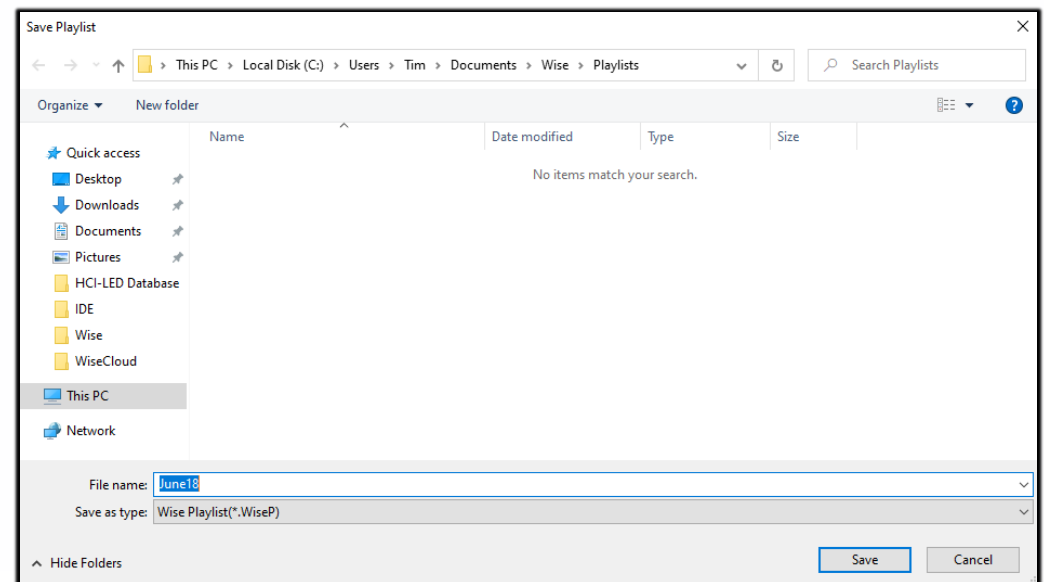
Page 1	Introduction
Page 2	Zones
Page 3	Playlists
Page 4	Slides
Page 5	Editor
Page 6	Layout
Page 7	Info
Page 8	Library
Page 9	Settings
Page 10	Publish
Page 11	Tips



# Playlists

The playlist box is located on the left hand side of Wise. It will hold all of the slides that are to be played in the selected zone. The two buttons at the top of the playlist allow to save and open a playlist (list of slides). The two buttons at the bottom of the playlist allow the removal of all the slides or just the selected one. The order of the slides can be changed by clicking dragging and dropping them into their desired location. The playlist box also allows images and videos to be imported by clicking, dragging, and dropping into it. It will import the media, and add it as a slide in the playlist box.

Copy the playlist to another zone by saving it, then click on another zone, and open the playlist that was saved. Another reason to save the playlist is so that it can be opened for use at another time.



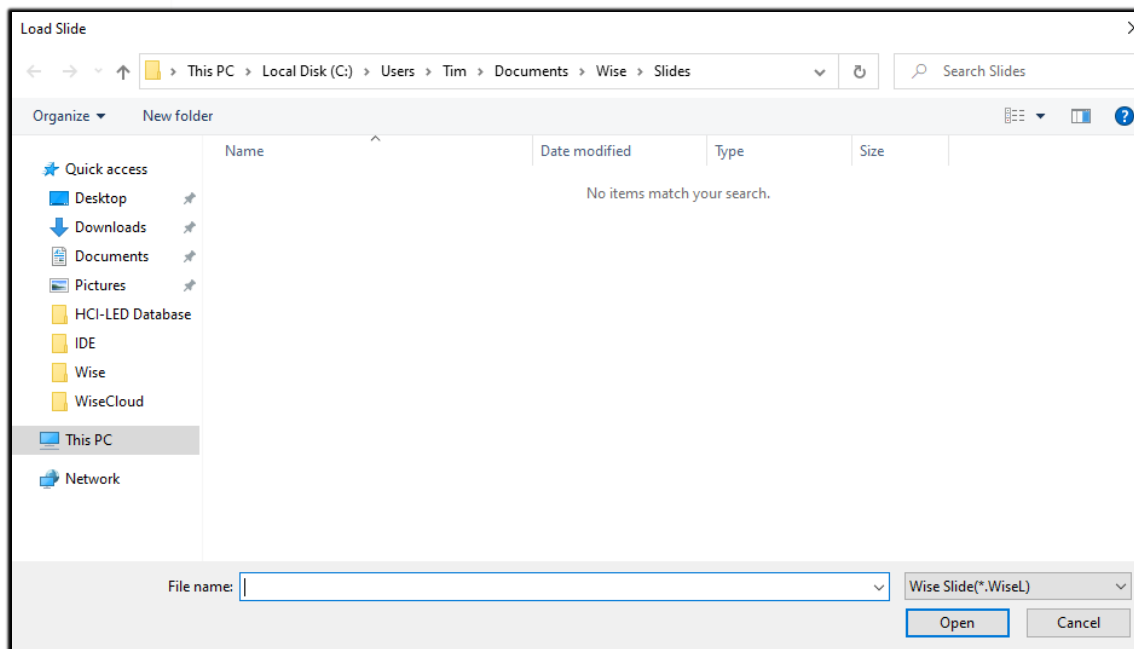
- Page 1 Introduction
- Page 2 Zones
- Page 3 Playlists
- Page 4 Slides
- Page 5 Editor
- Page 6 Layout
- Page 7 Info
- Page 8 Library
- Page 9 Settings
- Page 10 Publish
- Page 11 Tips


# Slides


The slide properties are located on the right hand side of Wise. The properties of the selected object are shown here. If there is no selected object, then the general properties of the slide are displayed. The two buttons at the top of the slide editor allow to save and open a slide. The two buttons at the bottom of the slide editor allow to add the selected slide, and add a blank slide into the playlist box. Add a blank slide to the playlist, then populate it with the illustrated objects that are located above the canvas.



Save a slide so that it can be retrieved at a later time. Open a slide, edited it if needed, then add it into the playlist. There are no limits to the number of slides that can be in a playlist. A slide can be saved and opened to and from any directory.







**Slide name**

**Transtitions**

**Background Color**

**Background Media**

**Duration**  
 H:  M:  S:

**Date Schedule**


From:   
 To:


**Time Schedule**

From:   
 To:

**Day Schedule**

All  Mon  Tue   
 Wed  Thur  Fri   
 Sat  Sun





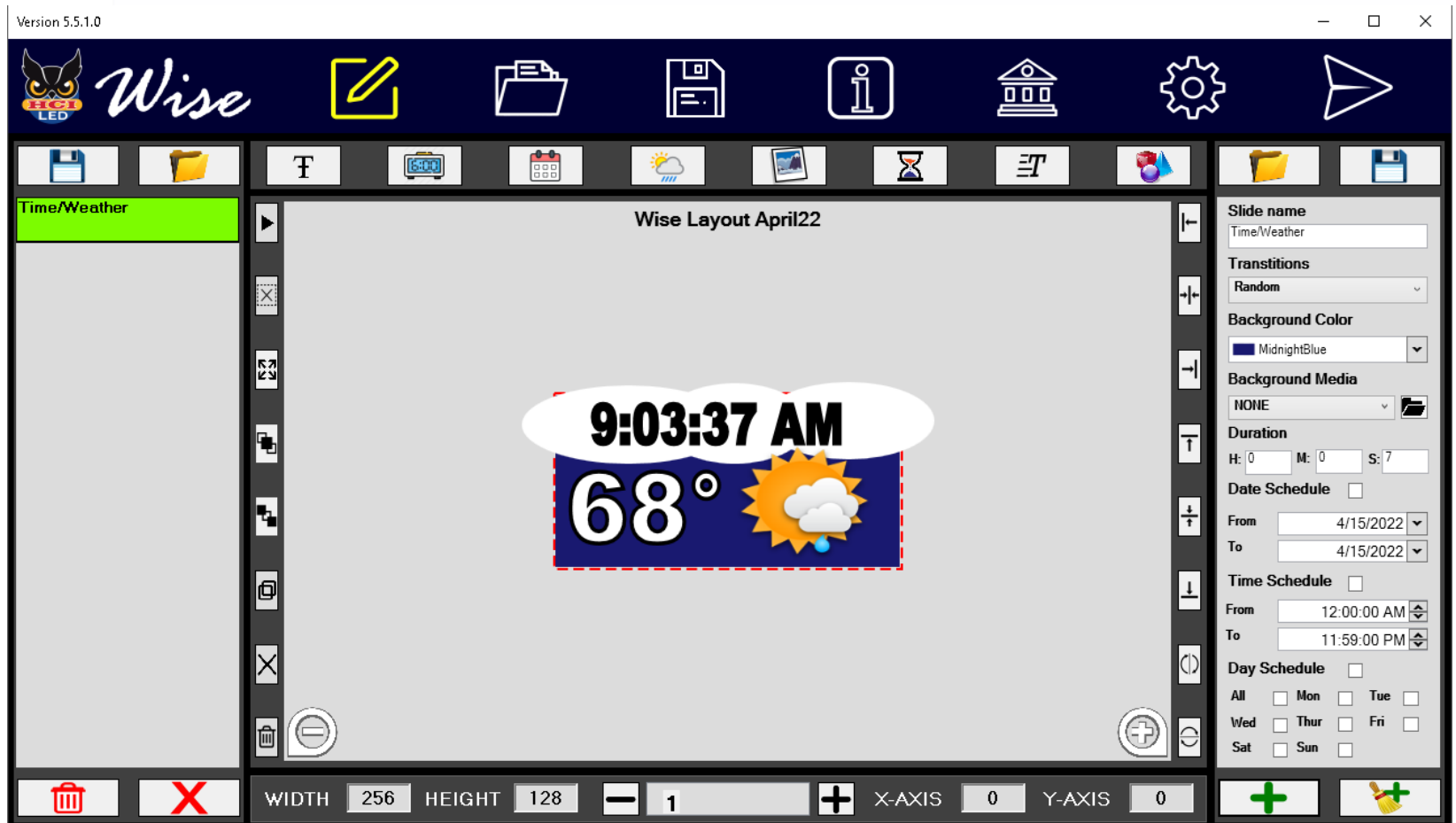
- Page 1 Introduction
- Page 2 Zones
- Page 3 Playlists
- Page 4 Slides
- Page 5 Editor
- Page 6 Layout
- Page 7 Info
- Page 8 Library
- Page 9 Settings
- Page 10 Publish
- Page 11 Tips



# Editor

The editing panel shows the canvas/working area in the center, the playlist box on the left, and the properties panel on the right. Select an object to add it to the slide and edit the properties. Select the gray area or deselect button to deselect the object and go back to the general slide properties. Set the general properties of the slide, and add a slide to the playlist using the buttons at the bottom right hand corner.

In order to schedule the slide to play during a specific time; go to the general properties, and check the boxes accordingly. To schedule by date, check the date schedule box, and to schedule by time, select the time schedule box, and to schedule by day, check the day schedule box. Input the from and to time and day. These can all be checked if needed. If no scheduling box is checked, then the slide will run indefinitely.



Version 5.5.1.0

Wise LED

Wise Layout April22

9:03:37 AM

68°

Slide name: Time/Weather

Transitions: Random

Background Color: MidnightBlue

Background Media: NONE

Duration: H: 0 M: 0 S: 7

Date Schedule:

From: 4/15/2022 To: 4/15/2022

Time Schedule:

From: 12:00:00 AM To: 11:59:00 PM

Day Schedule:

All  Mon  Tue

Wed  Thur  Fri

Sat  Sun

WIDTH 256 HEIGHT 128 X-AXIS 0 Y-AXIS 0

Page 1	Introduction
Page 2	Zones
Page 3	Playlists
Page 4	Slides
Page 5	Editor
Page 6	Layout
Page 7	Info
Page 8	Library
Page 9	Settings
Page 10	Publish
Page 11	Tips



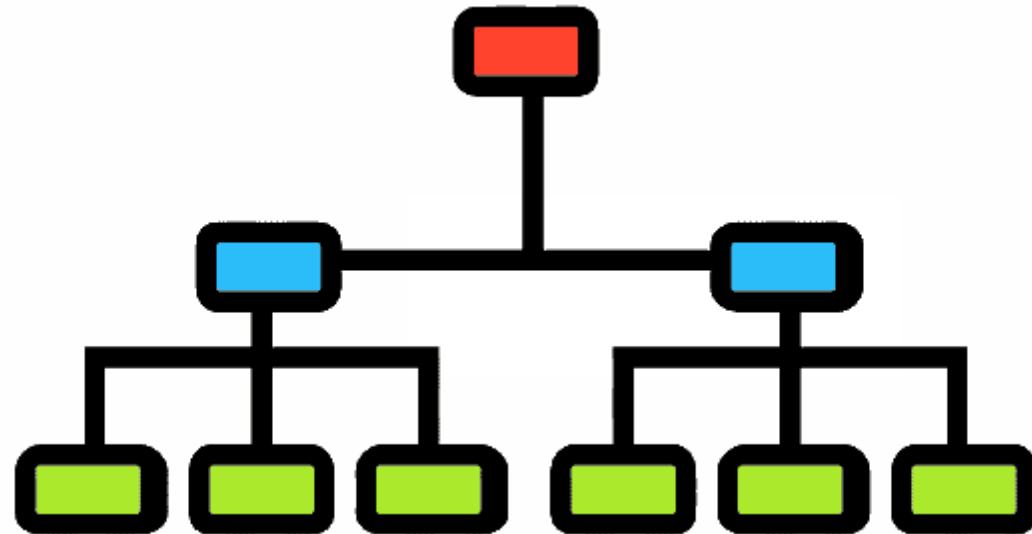
# Layout

The layout holds the zones, playlists, and slides. The layout is automatically saved when any changes are made. To manually open and save a layout use the open and save buttons in the navigation bar.

**layout**

**zones**

**slides**



Click the open layout panel button and all layouts will be listed by date modified. Click on a layout and its contents zones will be listed in the center. Click on a zone in the list to view all of its slides. Click load and the layout will be loaded. To remove a layout, select the layout to be removed, then click Remove Selected Layout. Click Create New Layout to create a new layout. Creating a new layout will default to one zone and the previously loaded parameters.

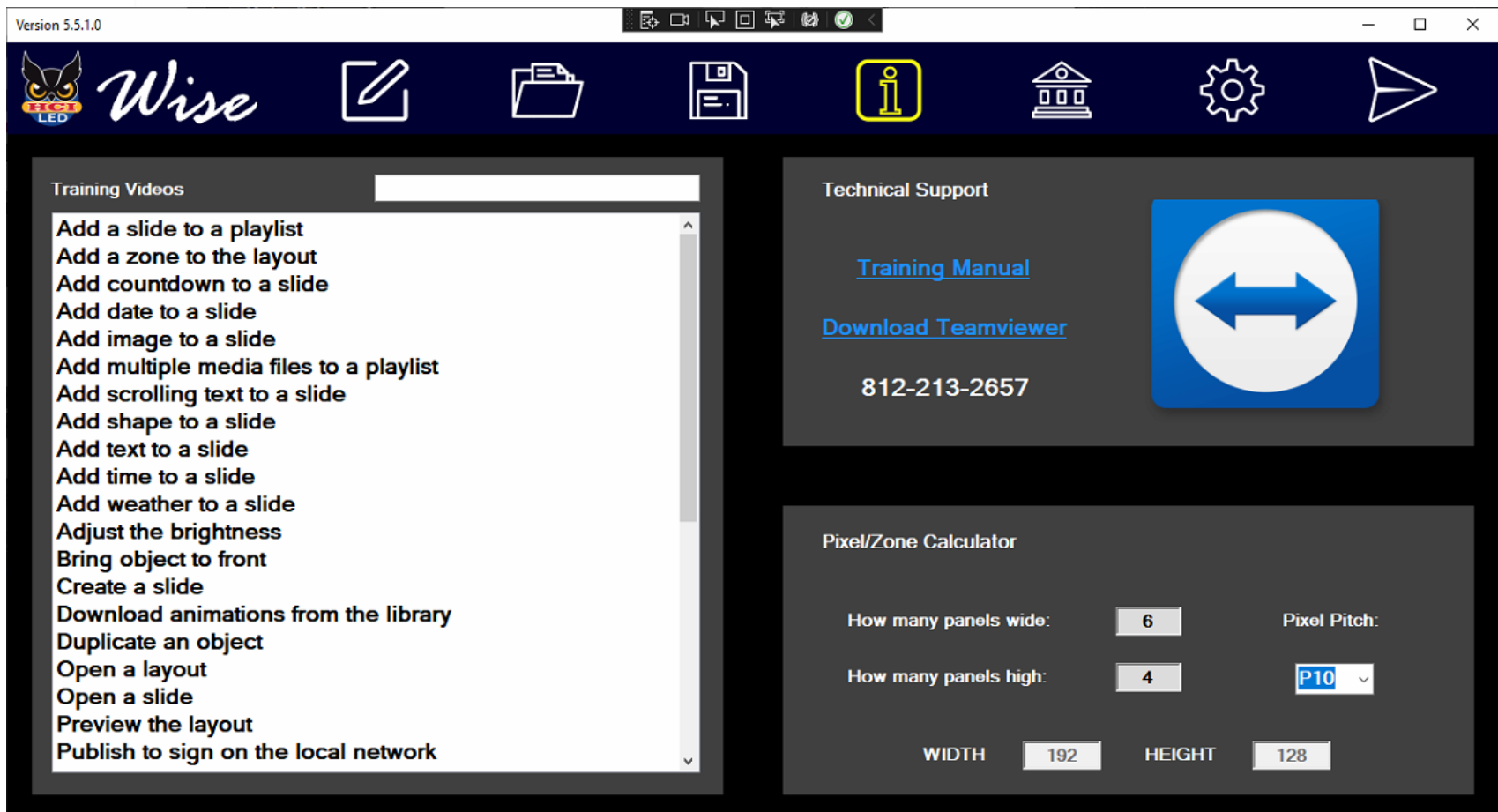
To change the name of the loaded layout, click the save layout button, input the new name, then click save. If the name already exists, a dialog will appear prompting to overwrite the file or not. The layout is automatically updated and saved when any changes are made to the zones, slides, brightness, and timed slides.

Page 1	Introduction
Page 2	Zones
Page 3	Playlists
Page 4	Slides
Page 5	Editor
Page 6	Layout
Page 7	Info
Page 8	Library
Page 9	Settings
Page 10	Publish
Page 11	Tips



# Info

Click on one of the videos in the list to watch the short film on the specific topic. Search for a specific topic by typing in the box above to sort the list. Review the current training manual, and download/install Team Viewer for remote support. Use the pixel/zone calculator to figure the pixel size of the EMC. The pixels are used to determine the width, height, and position of the zones.



Version 5.5.1.0

**Wise LED**

Training Videos

- Add a slide to a playlist
- Add a zone to the layout
- Add countdown to a slide
- Add date to a slide
- Add image to a slide
- Add multiple media files to a playlist
- Add scrolling text to a slide
- Add shape to a slide
- Add text to a slide
- Add time to a slide
- Add weather to a slide
- Adjust the brightness
- Bring object to front
- Create a slide
- Download animations from the library
- Duplicate an object
- Open a layout
- Open a slide
- Preview the layout
- Publish to sign on the local network

Technical Support

[Training Manual](#)

[Download Teamviewer](#)

812-213-2657

Pixel/Zone Calculator

How many panels wide:  Pixel Pitch:

How many panels high:

WIDTH  HEIGHT





# Library

Click the library button at the top of Wise in order to display the animation library. To download animations, first register for a cloud account, then click on the desired animation to download. It will be added into the playlist box as a slide. In order to register for a cloud account, open a web browser and navigate to [HCILEDCloud.com](http://HCILEDCloud.com) Click register as a new user, and enter your email and password.

Page 1	Introduction
Page 2	Zones
Page 3	Playlists
Page 4	Slides
Page 5	Editor
Page 6	Layout
Page 7	Info
Page 8	Library
Page 9	Settings
Page 10	Publish
Page 11	Tips





- Page 1 Introduction
- Page 2 Zones
- Page 3 Playlists
- Page 4 Slides
- Page 5 Editor
- Page 6 Layout
- Page 7 Info
- Page 8 Library
- Page 9 Settings**
- Page 10 Publish
- Page 11 Tips



# Settings

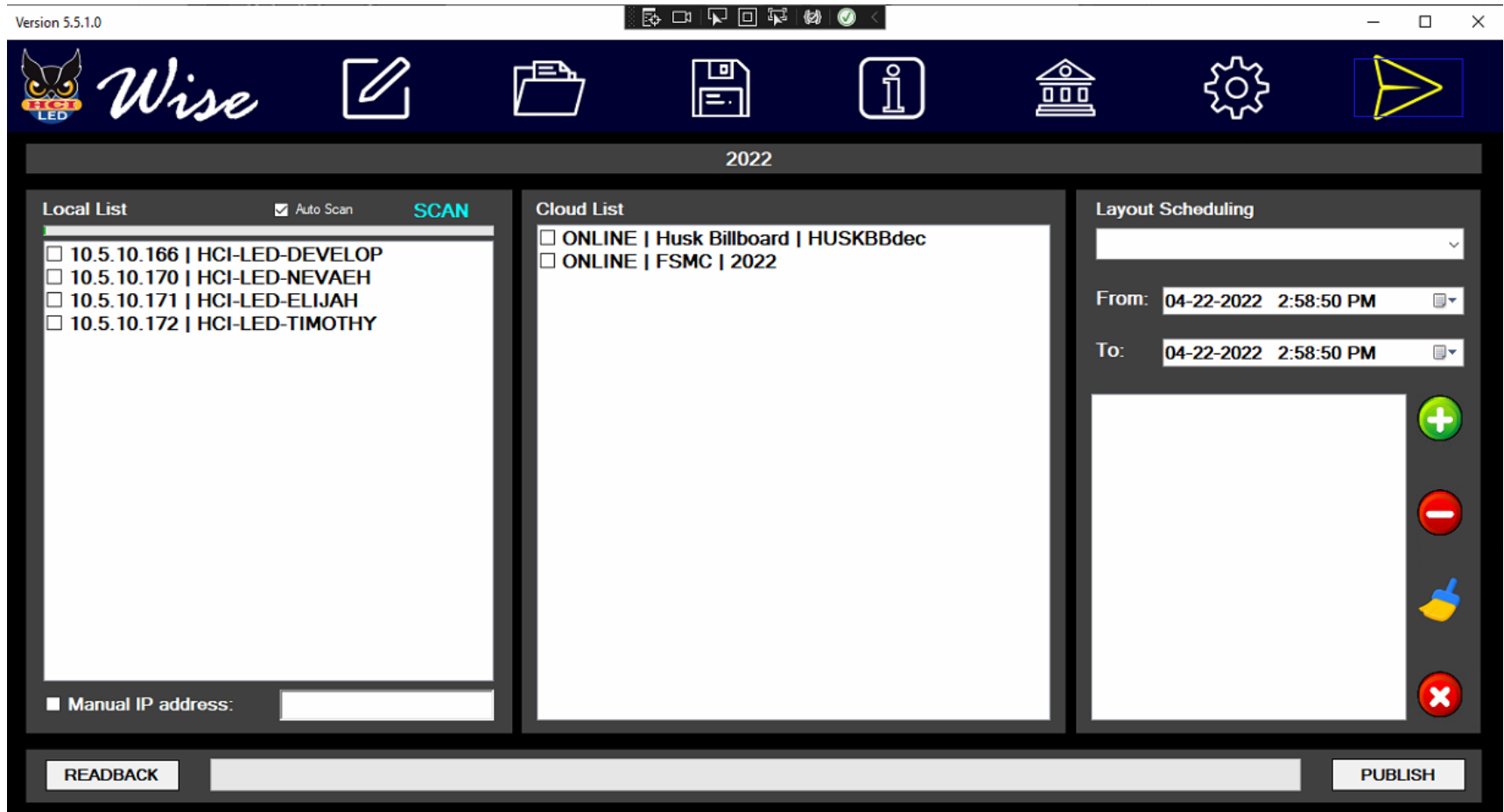
Click the settings button at the top of Wise to view and set settings for EMC's and login to a registered account. Select the EMC from the list at the bottom right to readback the settings. They are then displayed at the top right as well as the brightness settings at the bottom left. With an EMC selected at the bottom right, change the brightness settings to make the desired changes. Navigate to HUSKLEDCloud.com login, then register a new EMC under the account. Type in the name and the UUID, then click register.

- Page 1 Introduction
- Page 2 Zones
- Page 3 Playlists
- Page 4 Slides
- Page 5 Editor
- Page 6 Layout
- Page 7 Info
- Page 8 Library
- Page 9 Settings
- Page 10 Publish**
- Page 11 Tips



# Publish

Click the publish panel button at the top right of Wise. Publish the current layout, and also create a layout schedule. If there is no layout schedule, the currently loaded layout will be published. LAN Search searches for EMCs on the local network. Cloud list displays all of the EMCs that are registered with the cloud account. A manual IP address is provided in the case that the EMC is not found in the local network and a static IP is provided. Check the boxes to the left of the EMCs where the layout will be published. Wise allows to send layouts to multiple EMCs at one time, but can only readback from an EMC one at a time.



Version 5.5.1.0

2022

Local List	Cloud List	Layout Scheduling
<input type="checkbox"/> 10.5.10.166   HCI-LED-DEVELOP <input type="checkbox"/> 10.5.10.170   HCI-LED-NEVAEH <input type="checkbox"/> 10.5.10.171   HCI-LED-ELIJAH <input type="checkbox"/> 10.5.10.172   HCI-LED-TIMOTHY	<input type="checkbox"/> ONLINE   Husk Billboard   HUSKBBdec <input type="checkbox"/> ONLINE   FSMC   2022	From: 04-22-2022 2:58:50 PM To: 04-22-2022 2:58:50 PM

Manual IP address:

READBACK  PUBLISH

- Page 1 Introduction
- Page 2 Zones
- Page 3 Playlists
- Page 4 Slides
- Page 5 Editor
- Page 6 Layout
- Page 7 Info
- Page 8 Library
- Page 9 Settings
- Page 10 Publish
- Page 11 Tips**

# Tips



## Combine objects



## Use animation media

